



DOC VERSION 0.8 - APRIL 2017

Contents

Introduction	3
Overview	3
Installing	4
Configuring folder icons	5
Presets	6
Revert to Default	6
Multi-editing	7
Configs List	7
Context Menu	8
Upgrading	9
Changelog	10

Introduction

Thank you for purchasing the **Rainbow Folders** extension! We hope you enjoy using the product and that it makes your game development project a success.

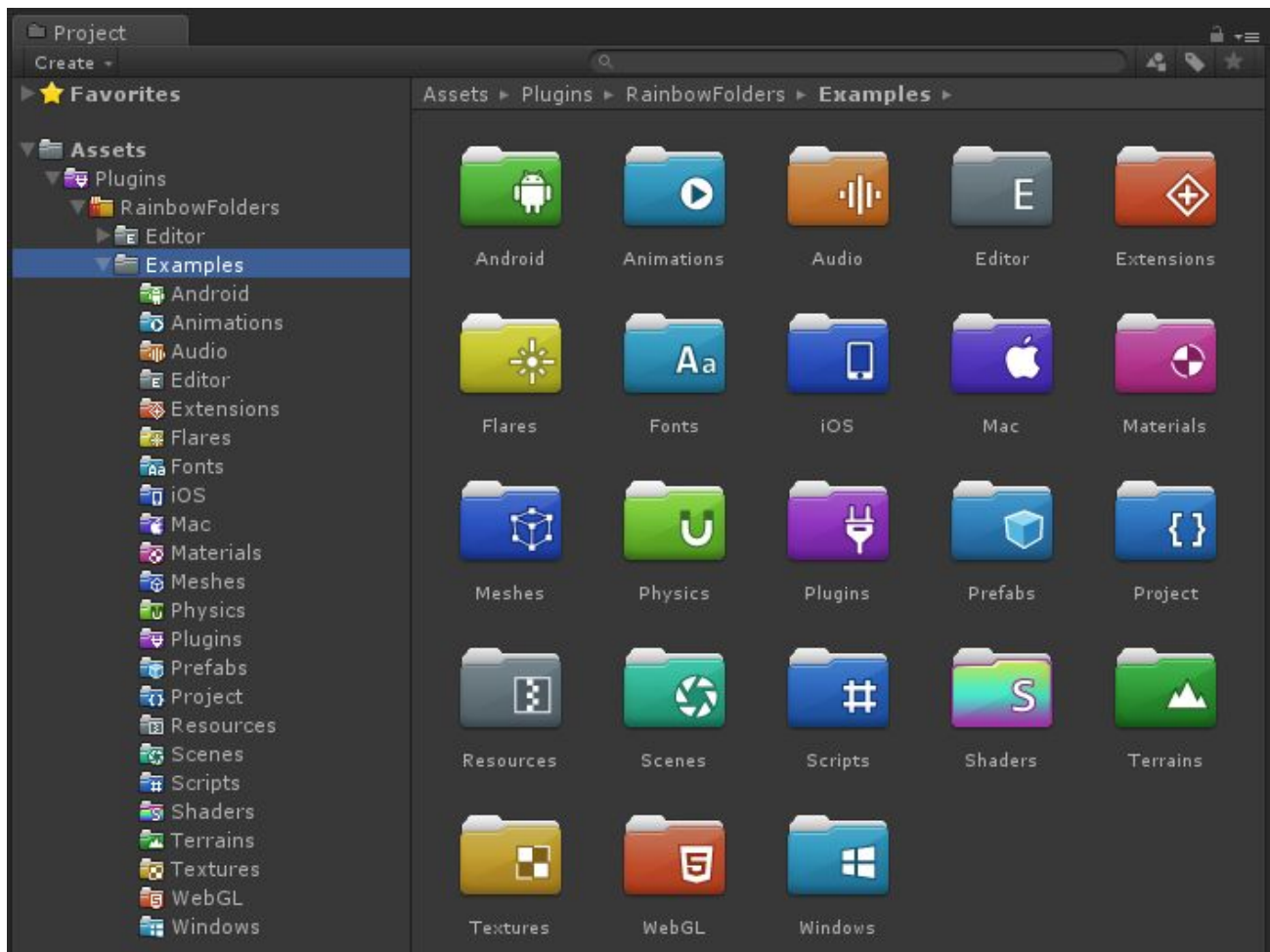
If you have questions, please do not hesitate to contact us at support@borodar.com, we will be glad to help you out.

Also, when you have a spare moment, please [leave](#) us a review on the Asset Store.

Overview

Have you ever thought about highlighting often used project folders? This simple but colorful asset allows you to do that!

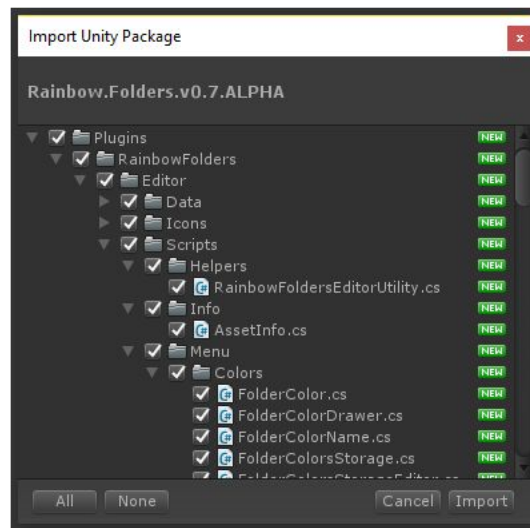
With "Rainbow Folders" you can set a custom icon for any folder in unity project browser:



Installing

Rainbow Folders is a standard Unity extension and should be installed like any other Unity package. Just drag the *RainbowFolders.unitypackage* into your current project, or in the Editor go to the drop-down menu **Assets** → **Import Package** → **Custom Package** and then browse to the *RainbowFolders.unitypackage* file.

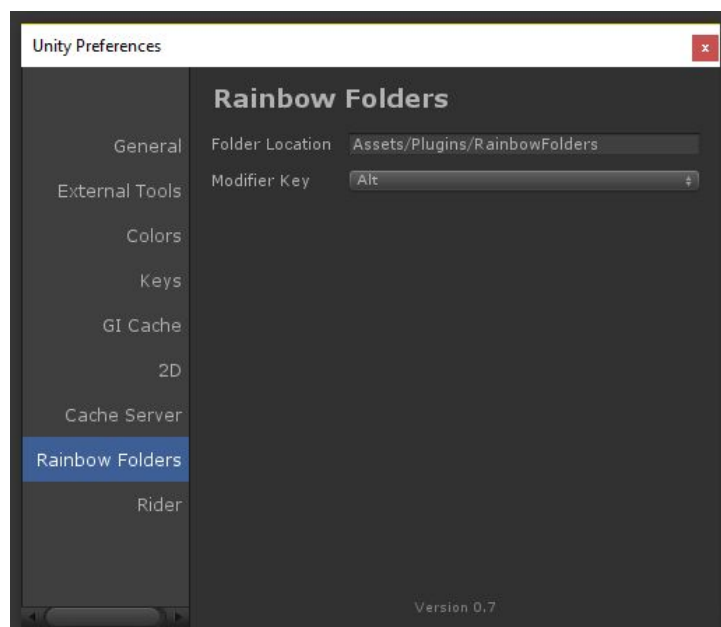
When downloading from the Asset Store then Download Manager will automate this process.



Once the Importing dialog appears, just click the Import button.

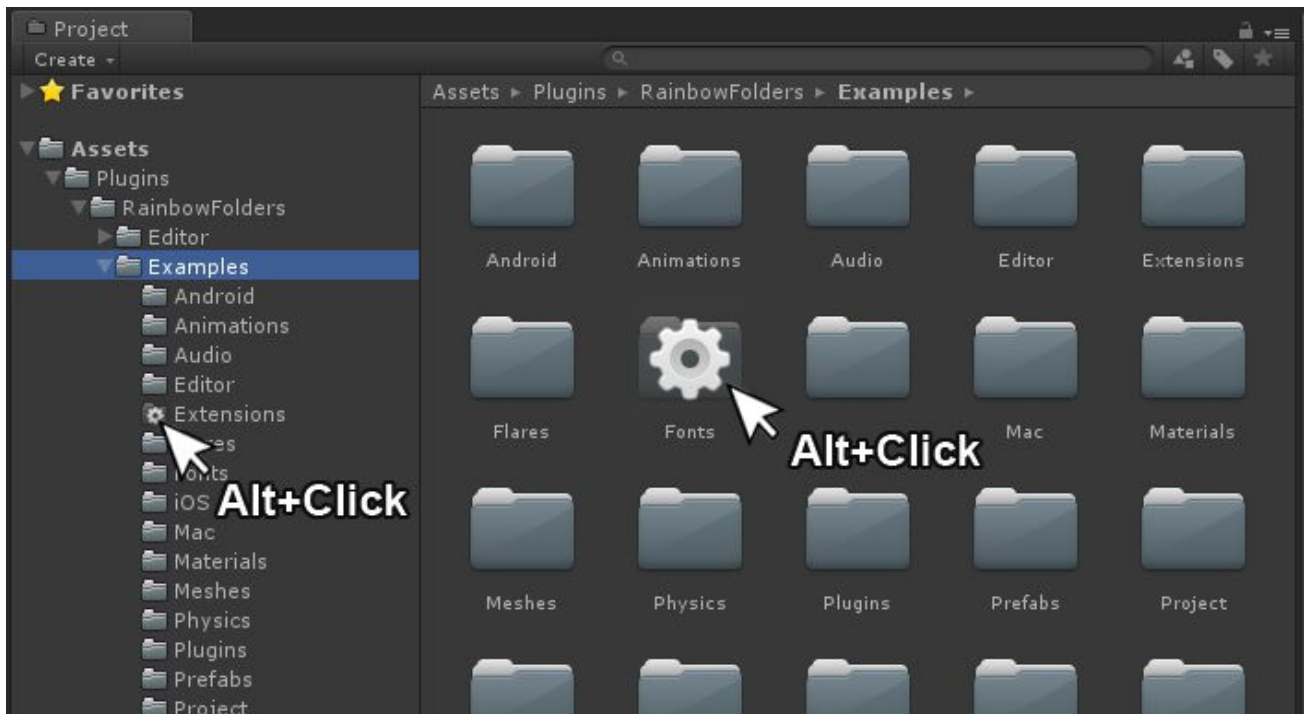
Folder location

The package will be imported into the **Assets/Plugins/RainbowFolders** folder by default. Most users prefer to keep it here, but you can freely move it wherever you want. Just go to **Edit** → **Preferences** → **Rainbow Folders** and update the folder location:

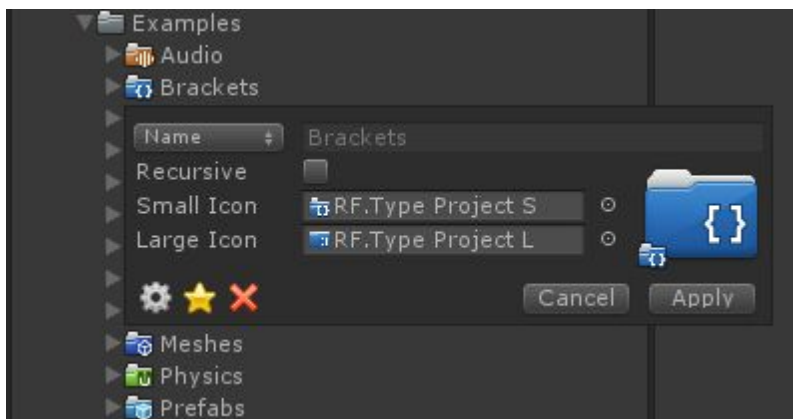


Configuring folder icons

To apply custom icon for some folder in your project view, just hold the **Modifier key** and click on any folder icon in Unity project browser. By default, it's **Alt key**, but you can change it in **Preferences**.



Configuration dialogue will appear, and you'll be able to assign icons to the corresponding folder.



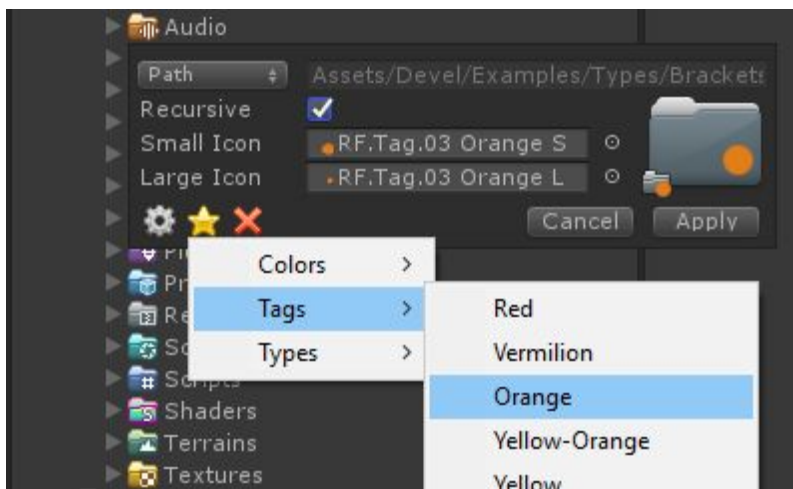
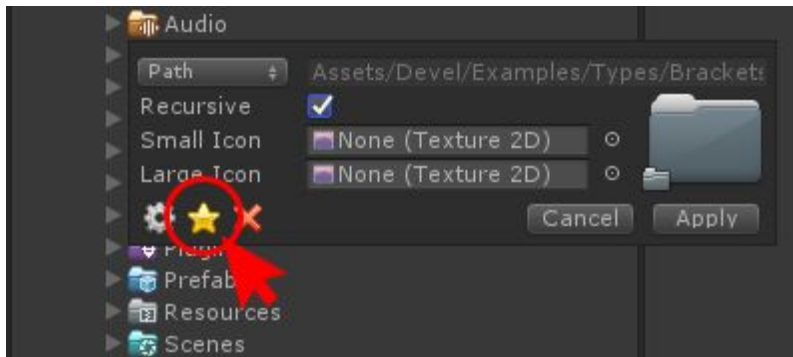
What you need to configure for each folder item, are these fields:

- **Folder Name** - icon will be applied to all folders with that name.
- or **Folder Path** - icon will be applied to a single folder with the specified path.
- **Recursive** checkbox - subfolders icons will be changed automatically
- **Small Icon** - custom icon for the left panel of the project browser (16x16 px)
- **Large Icon** - custom icon for the right panel of the project browser (64x64 px)

Your changes will be applied next time when the project browser will retrieve focus.

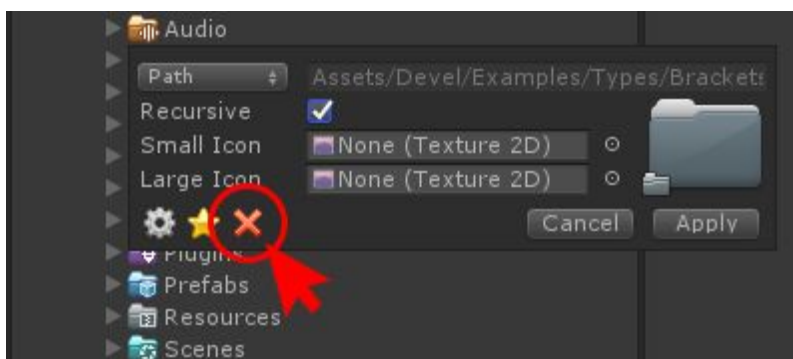
Presets

You can choose icons from few dozen of presets. Simply click on the star button in configuration dialog, select one of them from the drop-down menu and apply changes.



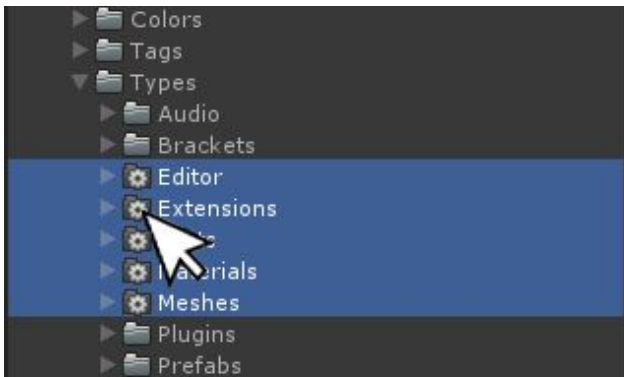
Revert to default

To reset the folder icon to the default one, just **Alt-click** on it, then press the red cross button in configuration dialogue and apply changes.



Multi-editing

You can also edit multiple folders at once, just select them all and **Alt-click** at one of their icons.

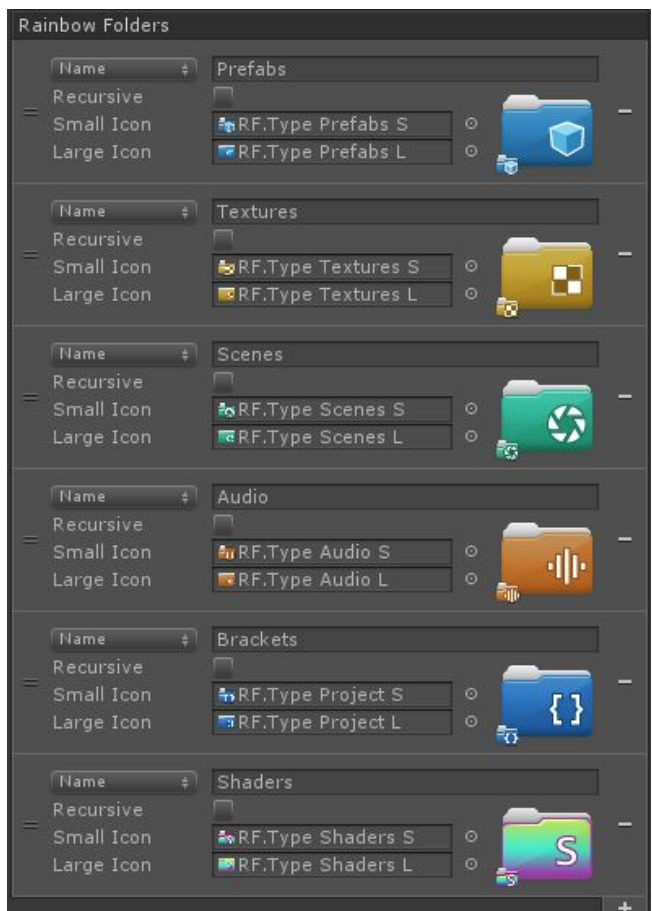
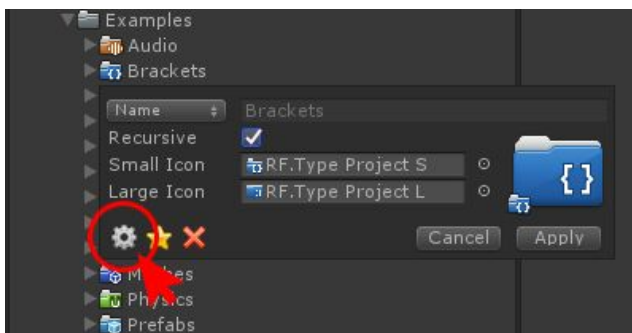


Configs List

To view all existing assignments, click on the gear button in the configuration dialog, then take a look at the Inspector.

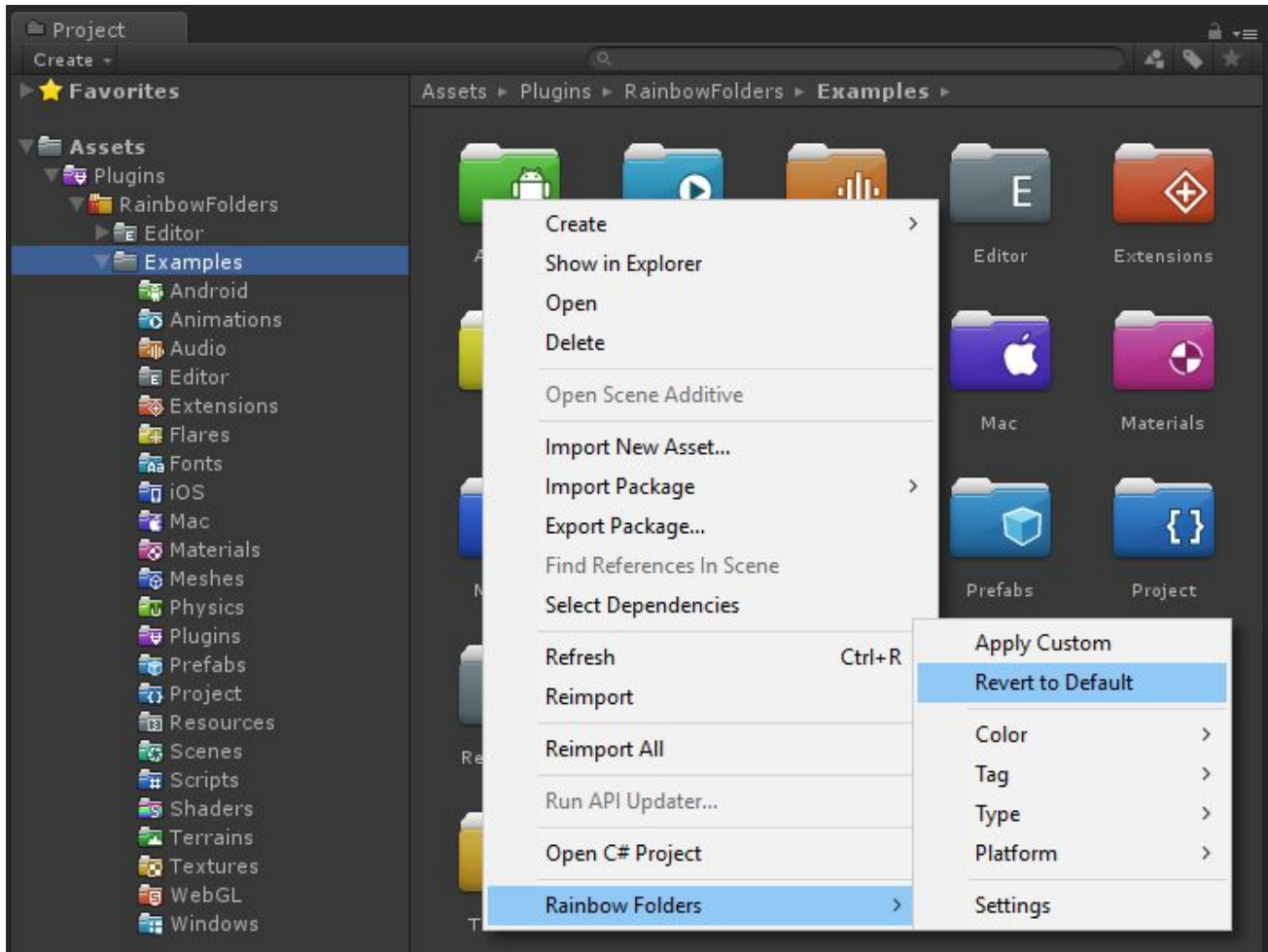
There is a reorderable list with all defined "folder" configurations. You can modify existing items, remove them using "-" button or add new ones by clicking "+" button below.

If there is more than one config for the same folder (including recursive assignments), then **latest (lowest) item** in the list will be applied.



Context Menu

All the above functionality is also available via the context menu.



Right-click on any folder in project view and select **Rainbow Folders → Apply Custom** to open configuration dialogue.

The **Rainbow Folders → Revert to Default** item will reset corresponding folder icon to the default one.

With **Color**, **Tag**, **Type**, and **Platform** sub-items you can easily apply custom icons from few dozen of presets, right from the context menu.

Select **Rainbow Folders → Settings** to view all existing assignments in the inspector.

Upgrading

Please always do a clean import of the **Rainbow Folders** package (delete the old version before importing the new one). Otherwise, you may receive a number of difficult to diagnose issues.

- Backup your settings file (optional):
`Assets/.../RainbowFolders/Editor/Data/RainbowFoldersSettings.asset`
- Delete the `Assets/.../RainbowFolders` folder.
- Delete the `Assets/Editor Default Resources/RainbowFolders` folder, if exists.
- Import the new version from package or from the Asset Store.
- Restore your settings file.

Changelog

v 0.8

- All icons have been completely reworked
- Added 12 new folder colors
- Added 12 new folder tags
- Added 3 new folder types (Animations, Physics, and Flares)
- Fixed bug when the Rainbow Folders menu item appeared on top of the context menu
- Fixed bug with applying icons recursively by name, when root icon didn't appear correctly

v 0.7.1

- Added support for Unity Version Control Overlay (beta)

v 0.7

- Added option to change modifier key for the configuration dialog
- Added support for Unity Collaborate (beta)
- Install "Rainbow Folders" to the Plugins folder by default
- Compatibility fix For Unity 5.6.0 beta

v 0.6

- Added option to apply custom icon for all subfolders automatically
- Compatibility fix For Unity 5.4.4

v 0.5.1

- Added back the context menu, according to numerous requests
- New platform icons (Android, iOS, Mac, WebGL, Windows)
- Minor bugfixes

v 0.5

- Improved workflow: change icons with alt-click on a folder, right in the project view.
- Added possibility to change icons for multiple folders at once
- Added option to move "Rainbow Folders" wherever you want in your project
- Got rid of the "Editor Default Resources" folder.
- Fixed the "Scripts" icon appearance for the dark theme
- Minor bugfixes

v 0.3

- Apply color "tags" for folders from context menu
- Support for coloring/tagging folders from left column view in two-column layout
- Support for batch coloring/tagging folders (select multiple folders and colorize/tag from context menu)
- Now keeping all settings assets in Editor Default Resources folder so they are not included in build.
- Changed namespace for Rotorz reorderable list, to avoid conflicts with existing installs of Rotorz plugins

- Fixed error messages in Unity 5.0.4x when loading settings
- New icons (Fonts, Shaders, Terrains, Meshes)

v 2.1

- Few more icons added
- Folder structure simplified
- Minor bugfixes
- Docs updated